

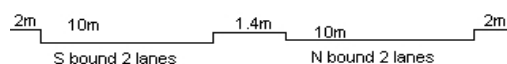
YEAR 2018

COVERAGE (B) STATION 6203

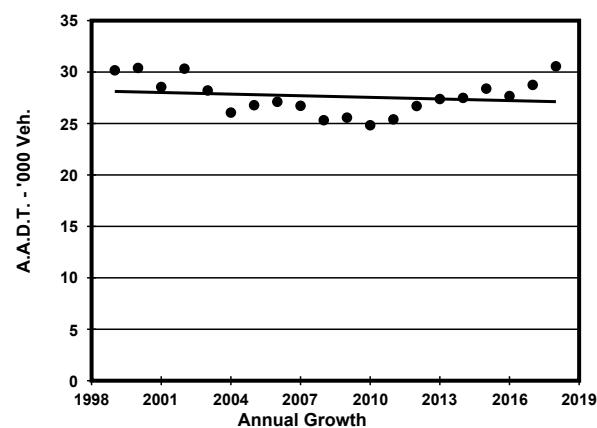
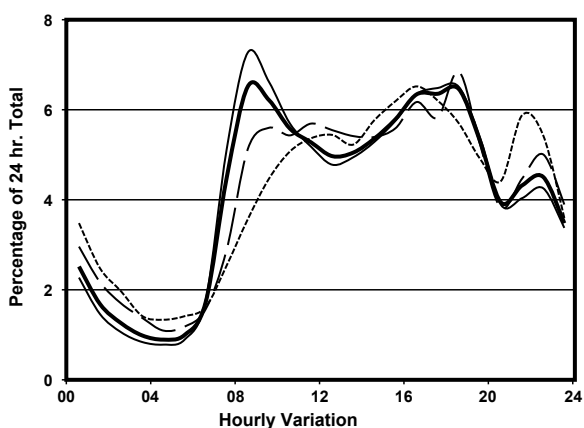
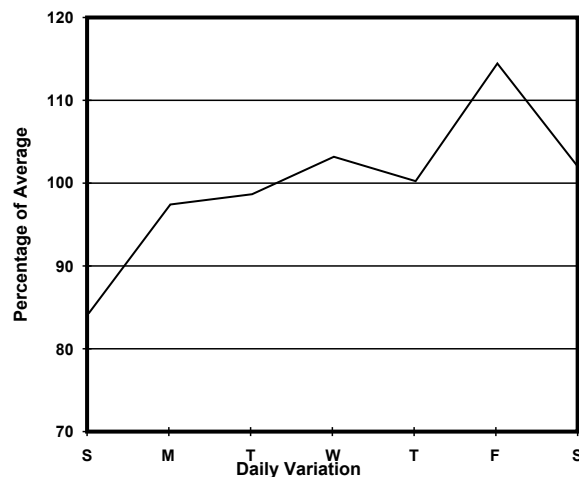
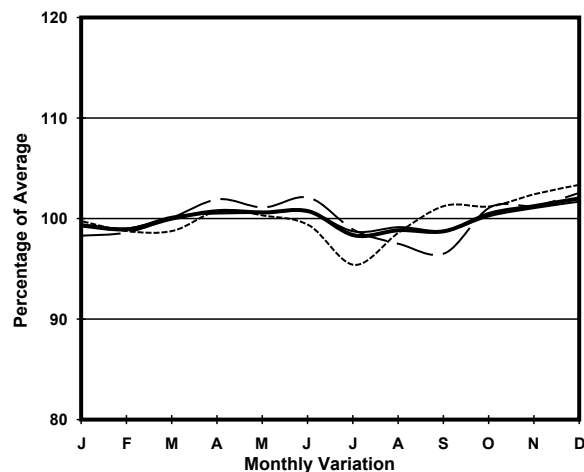
ROAD NETWORK MAJOR

ROAD TYPE PRIMARY DISTRIBUTOR

LINK CASTLE PEAK RD - KWAI CHUNG (from CHING CHEUNG RD to TAI WO INT)



1. TRAFFIC FLOW VARIATION AND GROWTH



— All day - - - - - Mon.- Fri. Sat. - . - . - Sun.

2. TRAFFIC CHARACTERISTICS (BY DIRECTION)

Parameter	All - Day	Mon. - Fri.	Sat.	Sun.
SOUTH BOUND				
A.A.D.T.	15150	15600	15860	13100
R 12 / 24 - %	69.3	70.7	66.7	63.7
R 16 / 24 - %	86.3	87.2	84.2	83.4
AM Peak Hour	0800-0900	0800-0900	0900-1000	0900-1000
One-way flow at AM peak hour	1100	1260	930	640
T - % (AM)	-	10.1	-	-
PM Peak Hour	1800-1900	1800-1900	1800-1900	1600-1700
One-way flow at PM peak hour	990	1010	1230	830
T - % (PM)	-	5.2	-	-
Prop.of commercial vehicles - 16 hr.	-	7.1	-	-
NORTH BOUND				
A.A.D.T.	15410	16080	15500	12850
R 12 / 24 - %	67.5	69.3	64.4	60.4
R 16 / 24 - %	86.7	87.9	84	82
AM Peak Hour	0900-1000	0800-0900	0900-1000	0900-1000
One-way flow at AM peak hour	900	1040	820	520
T - % (AM)	-	6.6	-	-
PM Peak Hour	1600-1700	1600-1700	1600-1700	1600-1700
One-way flow at PM peak hour	1080	1150	1020	870
T - % (PM)	-	6.8	-	-
Prop.of commercial vehicles - 16 hr.	-	7.4	-	-

3. OTHER INFORMATION AND COMMENT

4. Vehicle classification and occupancy - Monday to Friday

Time		Class of vehicle									
		Motor Cycle	Private Car	Taxi	Private LB	PLB	Goods veh.		Non Fr. Bus	Fr. Bus	
							Light	M & H		SD	DD
0700-0800	Pro	4.0	31.9	24.5	3.1	7.1	17.7	1.6	4.6	0.0	5.5
	Ocp	1.0	1.6	2.1	10.6	14.1	1.5	1.2	19.7	0.0	59.1
0800-0900 Peak hour	Pro	5.1	41.5	23.2	1.3	4.8	15.4	2.6	2.3	0.0	3.8
	Ocp	1.0	1.3	2.0	3.5	15.4	1.5	1.7	18.1	0.0	77.3
0900-1000	Pro	2.5	42.6	25.0	1.1	2.8	20.6	0.9	0.9	0.0	3.4
	Ocp	1.2	1.3	2.0	3.2	14.7	1.5	1.2	6.0	0.0	52.6
1000-1100	Pro	2.5	39.0	24.1	1.2	3.4	24.6	1.0	0.5	0.0	3.7
	Ocp	1.1	1.3	1.8	3.4	11.2	1.5	1.5	12.0	0.0	38.2
1100-1200	Pro	3.5	36.9	21.5	1.0	5.7	25.5	1.5	1.2	0.0	3.2
	Ocp	1.0	1.6	1.8	2.8	5.7	1.5	2.0	7.4	0.0	41.5
1200-1300	Pro	1.7	35.3	23.3	1.4	4.4	25.6	3.1	1.4	0.0	3.9
	Ocp	1.2	1.2	1.9	7.4	8.1	1.4	1.5	11.0	0.0	25.6
1300-1400	Pro	3.4	34.3	21.1	2.1	3.7	26.9	3.7	1.1	0.0	3.8
	Ocp	1.1	1.3	1.9	4.1	11.8	1.5	1.3	6.5	0.0	40.2
1400-1500	Pro	3.1	36.8	22.4	1.0	2.6	25.8	4.2	0.8	0.0	3.3
	Ocp	1.0	1.4	1.7	1.8	10.8	1.6	1.9	2.7	0.0	38.8
1500-1600	Pro	2.1	38.8	22.7	2.9	2.9	23.7	2.1	1.0	0.0	3.9
	Ocp	1.0	1.3	1.8	4.9	11.7	1.5	1.6	19.8	0.0	32.3
1600-1700	Pro	4.0	31.7	26.4	1.6	3.3	25.8	1.3	2.2	0.0	3.7
	Ocp	1.2	1.4	1.5	2.0	11.4	1.6	1.7	9.7	0.0	40.1
1700-1800	Pro	7.1	37.9	16.5	2.1	4.1	23.5	2.6	2.8	0.0	3.5
	Ocp	1.1	1.4	1.8	1.3	10.8	1.6	1.7	5.7	0.0	52.7
1800-1900	Pro	4.9	53.4	17.5	0.6	6.9	10.6	0.6	1.8	0.0	3.8
	Ocp	1.1	1.5	1.9	1.0	13.8	1.4	1.3	16.0	0.0	79.4
1900-2000	Pro	3.6	51.4	19.4	0.0	8.8	10.8	0.0	1.7	0.0	4.4
	Ocp	1.1	1.2	2.2	0.0	12.0	1.5	0.0	4.6	0.0	58.6
2000-2100	Pro	3.7	49.3	25.7	0.0	8.7	7.4	0.6	0.6	0.0	3.9
	Ocp	1.1	1.5	2.1	0.0	9.9	1.6	1.5	8.0	0.0	46.1
2100-2200	Pro	3.9	40.6	27.4	0.0	14.2	7.4	0.6	1.3	0.0	4.5
	Ocp	1.2	1.4	1.9	0.0	6.2	1.4	1.5	1.0	0.0	46.0
2200-2300	Pro	2.8	45.5	31.0	0.0	10.9	3.2	0.4	0.7	0.0	5.5
	Ocp	1.1	1.4	1.9	0.0	8.5	1.2	1.0	1.0	0.0	37.5
16 hours	Pro	3.7	40.6	22.9	1.2	5.6	18.8	1.7	1.6	0.0	3.9
	Ocp	1.1	1.4	1.9	4.2	10.8	1.5	1.6	11.3	0.0	50.0

Legend

Pro. Proportion of vehicles in % (Sum may not add up to 100% due to figure rounding)*

Ocp. Average occupancy of vehicles including both driver and passengers*

M&H Medium and Heavy

***** All traffic data are collected from combined bounds except for one way traffic